

Plug-In

Bandpass Filter

PIF-21.4+

50Ω Constant Impedance 18 to 25 MHz

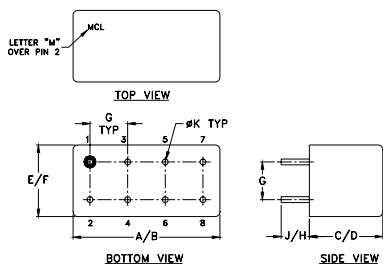
Maximum Ratings

Operating Temperature	-55°C to 100°C
Storage Temperature	-55°C to 100°C
RF Power Input	0.5W max.
Permanent damage may occur if any of these limits are exceeded.	

Pin Connections

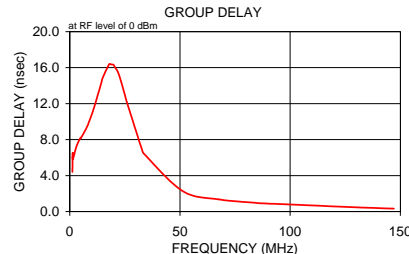
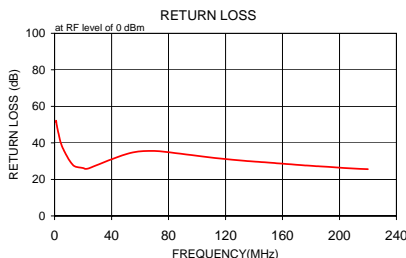
INPUT	1
OUTPUT	6
GROUND	2,3,4,5,7,8
CASE GROUND	2,5,7,8

Outline Drawing



Outline Dimensions (inch/mm)

A	B	C	D	E	F
.770	.800	.385	.400	.370	.400
19.56	20.32	9.78	10.16	9.40	10.16
G	H	J	K	wt	
.200	.20	.14	.031	grams	
5.08	5.08	3.56	0.79	5.2	

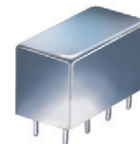


Features

- low VSWR in pass & stopbands, 1.3:1 typ.
- shielded welded case, hermetically sealed
- custom designs available

Applications

- harmonic rejection
- lab use
- military/hi-rel applications



CASE STYLE: A01
PRICE: \$17.20 ea. QTY: 1-9

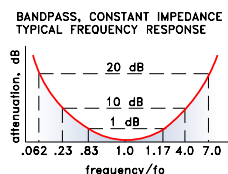
+ RoHS compliant in accordance with EU Directive (2002/95/EC)

The +Suffix has been added in order to identify RoHS Compliance. See our web site for RoHS Compliance methodologies and qualifications.

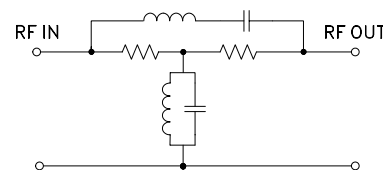
Bandpass Filter Electrical Specifications

MODEL NO.	CENTER FREQ. (MHz)	PASSBAND (MHz) (loss < 1 dB)	STOPBANDS		VSWR, 1.3:1 Typ. TOTAL BAND (MHz)
			(loss > 10 dB) at MHz	(loss > 20 dB) at MHz	
PIF-21.4+	21.4	18-25	4.9 & 85	1.3 & 150	DC-220

typical frequency response



electrical schematic



Typical Performance Data

Frequency (MHz)	Insertion Loss (dB)		Return Loss (dB)	Frequency (MHz)	Group Delay (nsec)
	\bar{x}	σ			
1.00	25.27	0.20	52.20	1.20	4.399
1.10	24.91	0.20	51.60	1.30	6.493
1.10	24.55	0.20	51.70	1.40	5.803
1.20	24.24	0.20	51.40	1.60	6.877
1.20	23.93	0.20	51.20	3.70	7.658
1.30	23.64	0.20	50.90	4.90	8.204
1.40	23.17	0.20	50.10	5.00	8.142
3.70	15.71	0.10	41.80	7.90	9.473
4.90	13.27	0.10	39.00	11.00	11.528
6.00	11.38	0.10	36.80	14.00	14.015
8.70	7.85	0.10	32.80	15.00	14.909
11.30	5.18	0.10	29.50	17.90	16.385
14.00	2.92	0.10	27.20	18.80	16.348
18.00	0.72	0.10	26.50	19.80	16.309
20.30	0.14	0.10	26.20	20.90	15.915
21.50	0.01	0.10	25.80	21.60	15.629
23.80	0.05	0.10	26.00	22.40	15.139
40.00	2.02	0.20	31.00	23.20	14.502
55.00	7.93	0.20	34.80	24.00	13.843
70.00	10.88	0.20	35.60	24.80	13.162
85.00	13.23	0.20	34.40	26.20	11.927
100.00	15.41	0.20	32.90	32.70	6.934
116.70	17.64	0.20	31.40	33.90	6.349
133.30	19.87	0.10	30.20	51.30	2.263
150.00	22.27	0.10	29.20	67.60	1.347
175.00	26.56	0.20	27.70	84.60	0.959
186.30	28.96	0.20	27.10	86.10	0.936
197.50	31.82	0.30	26.60	107.80	0.693
208.80	35.24	0.60	26.00	128.10	0.484
220.00	38.08	1.40	25.60	147.10	0.321

P.O. Box 350166, Brooklyn, New York 11235-0003 (718) 934-4500 Fax (718) 332-4661 The Design Engineers Search Engine Provides ACTUAL Data Instantly at minicircuits.com



IF/RF MICROWAVE COMPONENTS

For detailed performance specs & shopping online see web site

Notes: 1. Performance and quality attributes and conditions not expressly stated in this specification sheet are intended to be excluded and do not form a part of this specification sheet. 2. Electrical specifications and performance data contained herein are based on Mini-Circuit's applicable established test performance criteria and measurement instructions. 3. The parts covered by this specification sheet are subject to Mini-Circuits standard limited warranty and terms and conditions (collectively, "Standard Terms"); Purchasers of this part are entitled to the rights and benefits contained therein. For a full statement of the Standard Terms and the exclusive rights and remedies thereunder, please visit Mini-Circuits' website at www.minicircuits.com/MCLStore/terms.jsp.

REV.B
M108294
PIF-21.4+
090820